



THE CHURCH OF

# Our Lady of Mercy

65 THIRD STREET ✕ EAST GREENWICH, RI 02818



Phone..... 401-884-4968 Fax ..... 401-884-1415

Parish Email.....parish@olmparish.org

Parish Website..... www.olmparish.org

## Nineteenth Sunday in Ordinary Time ✕ August 11, 2013

### † MASS SCHEDULE †

#### Weekend

Saturday Vigil Mass..... 5:00 PM

Sunday Masses ..... 7:30, 9:00 & 10:30 AM

#### Daily

Monday - Friday ..... 7:30 AM

Saturdays & Legal Holidays..... 8:30 AM

#### Holy Day

Vigil Mass..... 5:00 PM

Holyday Masses..... 7:30 AM & 7:00 PM

### Our Lady of Mercy School

**Sr. Jeanne Barry, R.S.M.**

*School Principal*

55 Fourth Avenue

East Greenwich, RI 02818

School Phone ..... 884-1618

Email ..... secretary@olmschool.org

Web ..... www.olmschool.org

#### SACRAMENT OF CONFESSION

Saturdays at 4:00 PM or by appointment.

#### SACRAMENT OF BAPTISM

Second Sunday of the month. Preparation Class is required. Please contact one of the parish priests prior to birth of your child.

#### SACRAMENT OF MARRIAGE

Please contact one of the parish priests one year prior to the proposed date of your wedding.

#### SACRAMENT OF THE SICK

Please contact one of the parish priests if you are shut-in, sick, homebound or hospitalized.

#### SACRAMENT OF HOLY ORDERS

Please contact one of the parish priests or the Office of the Director of Vocations at 331-1316 or www.catholicpriest.com.

#### PARISH OFFICE HOURS

Monday - Friday ..... 8:00 am - 4:00 pm

**The Reverend Bernard A. Healey, S.T.L., J.C.L., Pastor**

**The Reverend Ryan W. Connors, S.T.L., Associate Pastor**

**Joseph V. Cavanagh, Jr.**

**William K. Wray**

*Parish Trustees*





## **PARISH DIRECTORY**

### **PARISH OFFICE**

Father Bernard A. Healey, *Pastor* ..... 884-4968  
 pastor@olmparish.org

Father Ryan Connors, *Associate Pastor* ..... 884-4968  
 associatepastor@olmparish.org

Deacon John Dowd, *Deacon Assistant* ..... 884-4968  
 deacon@olmparish.org

Mr. David Cote, *Business Manager* ..... 884-4968  
 parish@olmparish.org

Mrs. Sandra Demers, *Administrative Assistant* ..... 884-4968  
 parish@olmparish.org

Mrs. Carolyn MacCrae, *Bookkeeper* ..... 884-4968  
 bookkeeper@olmparish.org

Mr. Paul Anderson, *Facilities Director* ..... 884-4968  
 parish@olmparish.org

St. Patrick's Cemetery Office ..... 886-5296  
 parish@olmparish.org

### **OFFICE OF RELIGIOUS EDUCATION**

Mrs. Michele St. Jean (*Grades 1-5*) ..... 884-1061  
 reled@olmparish.org

Mr. Douglas Green (*Grades 6-8*) ..... 884-4410  
 confirmation@olmparish.org

### **OFFICE OF OUTREACH**

Mr. Douglas Green ..... 884-4410  
 outreach@olmparish.org

### **MUSIC MINISTRY**

Mr. Jeffrey Allard ..... 884-4968

Mrs. Deirdre Donovan ..... 884-4968  
 musicministry@olmparish.org

### **OLM SCHOOL**

Main Office ..... 884-1618  
 secretary@olmschool.org

Extended Day Program ..... 886-0742

New Discoveries Pre-School ..... 885-0776



### **SATURDAY, AUGUST 10**

*Anticipated Mass for the 19th Sunday in Ordinary Time*  
 5:00 PM Bishop Russell J. McVinney—42nd Anniversary

### **SUNDAY, AUGUST 11**

*The Nineteenth Sunday in Ordinary Time*  
 7:30 AM The Parishioners of Our Lady of Mercy  
 9:00 AM Joseph & Lenore Neri & Ralph Bountempo-Mem.  
 10:30 AM The Parishioners of Our Lady of Mercy

### **MONDAY, AUGUST 12—VJ DAY HOLIDAY**

*Weekday/St. Jane Frances de Chantal, Religious*  
 8:30 AM Donald Martin—12th Anniversary

### **TUESDAY, AUGUST 13**

*Weekday/Saints Pontian, Pope & Hippolytus, Priest, Martyrs*  
 7:30 AM Beatrice Basler—Memorial

### **WEDNESDAY, AUGUST 14**

*St. Maximilian Kolbe, Priest & Martyr*  
 7:30AM Deceased Members of the Ferruccio & Collins  
 Families—Memorial

*Vigil Mass of the Assumption of the Blessed Virgin Mary*  
 5:00PM William & Mary Mulchay—Memorial

### **THURSDAY, AUGUST 15**

*The Assumption of the Blessed Virgin Mary*  
 7:30 AM Isabella Almonte—Memorial  
 7:00PM Frank Dwyer—59th Anniversary

### **FRIDAY, AUGUST 16**

*Weekday/St. Stephen of Hungary*  
 7:30AM The Souls in Purgatory

### **SATURDAY, AUGUST 17**

*Weekday/BVM*  
 8:30 AM Doris Lawrence—Memorial

*Anticipated Mass for the 20th Sunday in Ordinary Time*  
 5:00 PM Rose Farina—Birthday Memorial

### **SUNDAY, AUGUST 18**

*The Twentieth Sunday in Ordinary Time*  
 7:30 AM Gus Paglia—Memorial  
 9:00 AM Vito & Marie Brescia—Memorial  
 10:30 AM The Parishioners of Our Lady of Mercy





Dear Parishioners:

We said "Farewell" to Sister Lucy and Sister Rose this past week. They have retired from full-time ministry and relocated to larger convents. There is a letter from the good sisters in this week's bulletin and also there new addresses if you wish to contact them and wish them well.

In your name, we thank Sister Rose and Sister Lucy for their many years of service to our parish and for their continued witness to the faith. May God continue to bless them both with good health and happiness in the years to come. We know that they continue to follow the mission of the foundress of their religious community, St. Lucy Filippini, who reminds us: "*The Church of God is not a restful garden, but a working vineyard.*"

The work continues getting our school ship shape for the coming year. The first day of school is scheduled for Wednesday, August 28th! It's hard to believe but it is just two weeks away! We are working with a security company to install some security measures to further strengthen the safety and security of our students and faculty.

There are still some openings in a few of our grades and tuition assistance is available for active OLM parishioners. If your child or grandchild is interested in a great education in a strong Catholic environment then stop by or call the OLM School to see if there is a place for

them.

It's hard to believe school starts soon. When I was a kid, school never began until after Labor Day. The summer didn't officially end until the last cookouts and beach outings on Labor Day had concluded. In some states the school year begins the first week of August. It seems that "*See you in September*" has now become "*See you in August*"!!

Things change and now summer for our OLM students ends on August 28th! In the meantime, please continue to pray for all of our students and faculty as they enjoy the remainder of their summer break. May they all return tan, rested and ready for another great year!

I recently came across this prayer called "*On A Day of Driving*" and it is wonderful prayer for this time of year as people vacation, drive to the beach, or make day trips. Perhaps we might offer it for those we know who are away for awhile. It reads:

*"God who watches over us, watch over this journey. Keep us free from affliction and strife, safe from danger and wrong doing, protected in Your loving sight. May we know strength and good fortune on the way, rest and peace upon our return.*

*May this travel be blessed with the shelter of Your gentle arms, the guidance of Your mighty hand, the gift of Your countless blessings. Bless our moments apart, bless our moments together. Grace upon*

*departure, joy upon return. Remembering to praise and bless Your Holy Name wherever You lead us. Amen."*

Monday marks "Victory Day" in Rhode Island, more commonly known as VJ Day. This day marks the surrender of Japan and the end of the Second World War. It is only a legal holiday in Rhode Island. It is a day to remember the fallen and to pray for all those who died during the Second World War and for peace in our world.

This week we also celebrate the Solemnity of the Assumption of the Blessed Virgin Mary on August 15th. This great feast is a Holy Day of Obligation for all Catholics. We have a full schedule of Masses: a Vigil Mass at 5:00PM on Wednesday and two Masses at 7:30AM and 7:00PM on the Holy Day itself.

On November 1, 1950 Pope Pius XII declared the Assumption of Mary to be a dogma of faith. This feast celebrates her assumption body and soul to Heaven. The words of the Solemn Declaration state: "*it was fitting that the Mother of our Lord, when the course of her earthly life was finished, should be taken up body and soul into the glory of heaven.*" I hope you make every effort to come and celebrate this great feast of our Blessed Mother.

See you on the Holy Day.  
God Bless. Go Sox!!

*Father Healey*

## The Catechism Corner

It's a question that always seems to come up every year at this time so let's just dive right into it and try to settle it. **Is gambling a sin??** YIKES!! That's a scary one --especially since it makes up such a large part of any parish festival. So, is it?? Does playing or even dealing Poker make one a bad Catholic?? Is the Roulette wheel spinner excommunicated?? Simply -- no, no, and no. "*Games of chance* (card games, etc.) or *wagers* are not in themselves contrary to justice." Therefore, gambling in and of itself is not sinful. It is a good thing to be enjoyed (that is, if one finds enjoyment in it). You don't need to gamble to have fun, just like you don't need to climb rocks either to have fun, but if you want to, go right ahead. This is not an unchecked approval of all gambling since all good things can be abused. Gambling can become sinful if it is taken to the excess. As is the case for all good things of this world, they are meant to be used in moderation, with all of the virtues guiding us -- temperance, justice, fortitude, and prudence. When we fail to use any good thing prudently we then commit sins. And the same thing can happen with these "games of chance" which do "become morally unacceptable when they deprive someone of what is necessary to provide for his needs and those of others. The passion for gambling risks becoming an enslavement." The moral culpability rests with the person gambling. He needs to determine what his own moderation would be in any given situation. "I'll play with \$20 tonight. Once it's done, I'm done." That's temperance...and that's the virtues at work helping us to use the good things of this world. Excluding gambling, or any other activity with so-called "negative social influences", such as dancing or drinking, has never been the practice of the Catholic Church. The Church believes that all good things can be used and enjoyed by virtuous people. The solution to the excesses of the world, such as gambling away your house on that one Black Jack hand, is not a prohibition of Black Jack but rather an education and exercise of the virtues that would regulate a more sane wager. So, if you would like to rock climb, go right ahead and have fun but be careful. If you would like to gamble, go right ahead and have fun but be careful. All good things in moderation. Before you check out what the dealer dealt you though, first **check it out** in the *Catechism of the Catholic Church* #2413.



YEAR OF FAITH 2012-2013

## Weekly Collection

**August 4, 2013**

Weekly.....	\$10,630.50
EFT.....	\$487.00
Peter's Pence.....	\$3,530.00
Outreach.....	\$1,257.00

*If you have been away on vacation or visiting another parish, we kindly ask you to please make up your missed budget envelopes. We depend solely upon your weekly support to meet our weekly parish expenses.*

***Thank you for your generosity!***

### Second Collections

**This Week: Building & Grounds**

## WEEKLY CALENDAR

Tuesday—Legion of Mary at 7:00PM  
Thursday—Bereavement Group at 4:00PM

***Please remember Our Lady of Mercy Church in your will or estate.***



**Monday, August 12, 2013**

**VJ Holiday**

Mass at 8:30AM

The Parish Office is closed for the holiday.



**III—Emily Cunanan & Mark De Souza**



Registrations for 2013-2014 RE Year are now being accepted. Please contact the Parish Office by phone at 884-4968 or via email to [parish@olmparish.org](mailto:parish@olmparish.org) to obtain a form.

Religious Education for Grades 1-5 will be held on Sundays, from 10-11. **We are looking for high school students to help as TEACHER'S AIDES in the classrooms especially with those preparing for First Communion, Second Grade. This is an exciting opportunity to help your church and work with the children!** If you are a Confirmed high school student and would like to volunteer, please e-mail Mrs. St.Jean at [reled@olmparish.org](mailto:reled@olmparish.org) or call 884-1061.

**Confirmation families are reminded that ALL paperwork is past due.** Please send it in ASAP. Confirmation is October 6th at 5:00pm.

**Registrations for all RE grades are due by July 31st.**

**OLM Religious Education Schedule 2013-2014**

**RE Grades 1—5**

Sundays 10:00AM—11:00AM

**RE Grades 6—8**

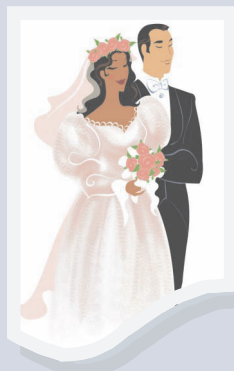
Sundays 6:00PM—7:00PM



The summer months are known to have a decline in donations to the **OLM Food Pantry**. Please continue to think of those in need. Grocery Gift Cards of \$10 are also helpful. Thank you for your support.

**The next Bereavement Support Group meeting** will be Thursday, August 15, from 4PM - 6PM at Mercy House, 57 Second St. East Greenwich, RI. All those who are experiencing grief over the lose of a loved one are invited to attend.

## Wedding Anniversary Celebration



The Diocese of Providence Cordially invites you and your spouse to celebrate your 25th, 40th, 50th or Over Wedding Anniversary Sunday, October 6, 2013 at 1:00PM Cathedral of Sts Peter & Paul Providence, RI

The 2013 Wedding Anniversary Celebration includes: Mass, Renewal of Vows, Personalized Certificate & Reception for you and your guests. Bishop Thomas Tobin is to be the Main Celebrant & Homilist. To register for this event please contact the OLM Parish Office at 884-4968 or [parish@olmparish.org](mailto:parish@olmparish.org)



Interested in the Knights of Columbus? Would you like to learn more about it? Please contact Grand Knight Tom Mahoney at [tom@tommymahoney.com](mailto:tom@tommymahoney.com)



Our Lady of Mercy School is still accepting applications throughout the grades. There are a few available spaces in all the grades except grades 7 and 8. The Pre K program is three full days (M, W, F). Kindergarten is a full day program building a strong foundation in both Reading and Math. All grades have Religion on a daily basis. In addition to the regular subjects, students have Spanish and Computer/tech in their weekly schedule. New Science kits have been introduced in elementary grades and the students love them. If you are looking for an excellent curriculum grounded in the Catholic faith please call 884-1618 to learn more about OLM School. **Tuition assistance is available for all OLM Families.** Our Mission is: "...that Mercy may flourish."

# Farewell

Dear Our Lady of Mercy Parishioners:

By the time you will read this message, we will be on our way to our new assignments. It is impossible to express our deep and sincere gratitude to each individual, so we hereby extend our thanks to all of you for your love, respect, generosity, and kindness. In particular, we were touched by the gift of the lovely Our Lady of Mercy statues that we will each take to our new homes. What a heartwarming remembrance they will provide of our treasured years at this parish.

We want to thank in particular the members of the morning prayer group, the Legion of Mary, the sacristy personnel (altar servers, cleaners, linens, etc.) and the parish catechists. Most of all, Father Healey, thank you for the kind help you have offered since you arrived.

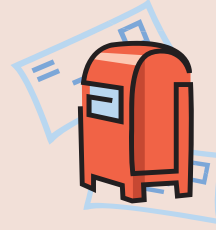
To all who have given of their time and talent—thank you! thank you! We also thank the parents for their cooperation in instilling in their children a true love for God because, as we know, the flowers of tomorrow come from the seeds of today. We can be sure that through a shared dedication of our children to Jesus Christ now we offer nourishment for their Catholic Christian fulfillment as they grow.

You may contact us at the addresses listed in the bulletin, and please know that you will remain in our prayers. Likewise, we ask that you keep us in prayer as we take the next step in our journey toward the Lord our God.

Sincerely,  
Sister Rose and Sister Lucy



## New Addresses for Sister Lucy and Sister Rose



Sr. Lucy Vescera, MPF  
Our Lady of Mt Carmel Convent  
117 State Street  
Bristol, RI 02809

Sr Rose Iapola, MPF  
St Augustine of Canterbury Convent  
45 Henderson Road  
Kendall Park, NJ 08824

## The Solemnity of the Assumption of the Blessed Virgin Mary

August 15th  
*A Holy Day of Obligation*



### Schedule of Holy Day Masses

Wednesday, August 14, 2013  
Vigil Mass at 5:00PM

Thursday, August 15, 2013  
Masses at 7:30AM & 7:00PM

# HILL FUNERAL HOME

Michael E. Caparco, Director  
 Deborah A. Caparco Runshe • Betsy M. Caparco Harris  
 822 Main Street, East Greenwich **884-9222**



401-738-0511

Buyers, Sellers and Appraisers of ESTATE JEWELRY  
 3228 Post Road  
 Apponaug Village  
 Warwick, RI 02886  
 www.placejewellers.com

# FRANK'S TOWN LINE LIQUOR

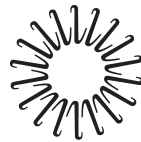
884-7517  
 5782 Post Road • E. Greenwich

## For Art's Sake

SCHOOL OF FINE ART  
 JOANN WILKS  
 Certified Art Teacher  
**885-3558**  
 5853 POST ROAD • PLAZA I • EAST GREENWICH, RI 02818

## PrintShops Inc.

Since 1977  
 Quality Printing and Graphic Services  
 Your Quality Starts Here!  
**401-885-1226**  
 Ken and Bernice Mills ~ Owners  
 70 Cliff Street E. Greenwich



## Lifespan Laboratories\*

HIGHEST QUALITY,  
 EASIEST ACCESS

For a List of Patient Service Center Locations:  
 (401) 793-4242 (800) 980-4244

www.lifespanlabs.org

\*RIH Ventures d.b.a. Lifespan Laboratories



## Shaggy Chic

Pet Boutique  
 (401) 667-7273

3 Main St., Wickford, RI

## Chef-a-Roni

Fancy Foods  
 Since 1967 **884-8798**  
 Featuring regional specialties from Italy, Germany,  
 Great Britain & Scandinavia, for over a quarter century.  
 2832 South County Trail • East Greenwich, RI

## HELPING PEOPLE REMAIN INDEPENDENT AND SAFE AT HOME

Please Call: 401-885-2273 (CARE) Or  
 E-mail: infohomeseniorcare@verizon.net  
**@home**  
 SENIOR CARE  
 All service providers are bonded, insured, licensed, and/or certified.  
 4635 POST ROAD • SUITE 3 • E. GREENWICH, RI 02818

## DRIZZLE PIZZA

WE CATER • WE DELIVER • FREE DELIVERY • ONLINE ORDERING  
 Opening Early Starting Sunday, September 9th  
**DrizzlePizza.com • 401-DZU-2020**  
 1855 South County Trail • East Greenwich, RI



A Skilled Nursing & Short Term Rehab Facility  
 COME VISIT US  
 The best way to experience Scalabrini Villa is through a tour.  
 We invite you to call to schedule a personal visit.  
 Our short term rehab unit is designed with beautiful private rooms overlooking Narragansett Bay.  
**TEL 401-884-1802 • FAX 401-884-4727**  
 dianeg@scalabrinivilla.com  
**www.scalabrinivilla.com**

860 No. QUIDNESSETT ROAD • NO. KINGSTOWN, RI 02852



# FINN'S HARBORSIDE

Soothing Charm On The Water With A Beautiful Full Water View

Specializing In: Lobster • Seafood • Steaks

38 Water Street / East Greenwich • www.finnsharborside.com **884-6363**



Call me today for more information on how your business can benefit by joining the others who support this church bulletin program.



Edward

401-286-5899

# BRENTWOOD NURSING HOME

4000 Post Road • Warwick, RI  
**(401) 884-8020**



Find out how far your heart can reach.  
 Millions of people overseas depend on you. Please help.

1-888-354-0060 • CRS.ORG/cb

Catholic Relief Services serves the poor in nearly 100 countries around the world.

## What if you are **Alone** and have an **Emergency**?

Just One Push of a Button can Protect You from **Emergencies at Home and Away!**

- ✓ Medical **AS LOW AS**
- ✓ Falls **\$1 A DAY!**
- ✓ Fire
- ✓ Burglary

NOW WITH GPS!



You're never alone with Lifewatch!  
**800.480.9921**  
 www.lifewatch-usa.com



"I'm never alone with LIFEWatch."  
 -Dick Van Patten



## Rhode Island Single Catholics



CatholicMatch.com/RIingles

**DOORLEY AGENCY, INC.**  
**INSURANCE**  
 17 Sixth Ave. • East Greenwich, RI 02818  
 (401) 886-9600 • Fax (401) 886-9622  
[www.DoorleyAgency.com](http://www.DoorleyAgency.com)

**Wesson Construction, Inc.**  
 Rick Wesson, Lic.# 17503  
 ADDITIONS • CUSTOM CABINETS • REMODELING  
 65 RIDGEFIELD DRIVE • E. GREENWICH, RI  
 401.884.0970

**DR. ROBERT E. MILLER • DR. STEPHANIE SCHULTZ**  
**COMPLETE FAMILY EYE CARE**  
**CONTACT LENSES QUALITY EYEWEAR**  
 5393 Post Road East Greenwich, RI  
 884-6066  
 Fellow American Academy of Optometry

Bob Knych • Lic. #20547  
**FREE ESTIMATES**  
 FULLY INSURED  
*Gem Paving and Seal Coating*  
 BUS 401-725-6705 • 401-475-1010  
 PAWTUCKET, RI 02860

*Al Luciano*  
**SANDING BARK MULCH**  
 21 Victory St., East Greenwich  
**884-2998**

Welcome to Playground Prep  
 Preschool and Child Care Center  
 Where every child is made to feel  
 valued and successful  
**401-885-PLAY (7529)**  
 Full Day & Half Day • Before & After School  
 Kindergarten • Summer Programs  
 An Early Education Adventure [www.playgroundprep.com](http://www.playgroundprep.com)

Rhode Island's  
 Foremost Banquet  
 Facility Overlooking  
 Narragansett Bay  
 LORRAINE KANE  
**884-1100**

**THE ORIGINAL**  
**Watson Mulch**  
 Pavers • Natural Stone • Bark Mulch • Cobblestone • Decorative Stone  
 Retaining Walls • Screened Loam • Stone Veneer • Bluestone Flagging

**1500 SOUTH COUNTY TRAIL, ROUTE 2  
 EAST GREENWICH, RI  
 401-885-0600  
[WWW.WATSONMULCH.COM](http://WWW.WATSONMULCH.COM)**

**BASLER CHIROPRACTIC**  
 Dr. Steven M. Basler ~ Dr. Kathy L. Basler  
**885-0260**

**Cabot House**  
*Fine Furniture & Design*  
 Ann Hughes, Interior Designer  
 Saturday Thru Wednesday  
 Appointments Available  
**401-828-6002 X12**  
**FAX 401-828-7077**  
[ahughes@cabothouse.com](mailto:ahughes@cabothouse.com)  
 555 QUAKER LANE • WEST WARWICK, RI 02893

**ALPHA APPRAISAL COMPANY**  
 4635 Post Rd, Warwick  
**Richard Bartlett**  
**401-886-9300** [dick@alphaappraisal.net](mailto:dick@alphaappraisal.net)

**MARSHA DUPREE, M.D.**  
 ~ DERMATOLOGIST ~  
 DERMATOLOGIC AND COSMETIC TREATMENT  
 1050 Main Street, Suite 15  
 East Greenwich, RI  
**884-0148**

**Therese Vezeridis** Residential  
 Broker Associate  
 Circle of Excellence  
**CELL 401-864-4364**  
[tvezeridis@residentialproperties.com](mailto:tvezeridis@residentialproperties.com)  
 413 Main Street  
 East Greenwich, RI 02818

**BART'S INC.** CARPET SALES  
 a complete flooring center  
**884-8300 • 295-0164**  
[www.barts-carpet.com](http://www.barts-carpet.com)  
 491 DAVISVILLE ROAD • NORTH KINGSTOWN, RI

**PORTSMOUTH ABBEY SUMMER PROGRAM**  
*Enrichment, Academics, Excitement*  
 JUNE 30- JULY 27, 2013  
 FOR RISING 7TH-10TH GRADERS  
 Visit [www.portsmouthabbey.org](http://www.portsmouthabbey.org) or call 401.643.1225  
 New England's Leading Catholic Coeducational Boarding School  
 Portsmouth, Rhode Island

**Dr. Arianna Iannuccilli**  
 CHIROPRACTIC PHYSICIAN  
 560 Elmwood Avenue  
 Providence RI 02907  
**401-421-1125 • Fax 401-421-3951**  
 1571 Newport Avenue Unit 4  
 Pawtucket, RI 02861  
**401-475-6201 • Fax 401-475-6202**

**Webster Bank** WEBSTER BANK, N.A.  
 563 MAIN STREET  
 E. GREENWICH, RI 02818  
**HELENE PELOSI**  
 Residential Mortgage Loan Officer  
**P 401-447-2203 • F 860-314-4817**  
[hpelosi@websterbank.com](mailto:hpelosi@websterbank.com)  
 NMLS#505232

**The Remington House Inn**  
 Located in historic Apponaug Village  
**(401) 736-8388**  
 Patrick & Michael Berek  
 Proprietors  
 Conroy Outar, General Mgr.  
 3376 Post Road  
 Warwick, RI 02886  
[www.theremingtonhouseinn.com](http://www.theremingtonhouseinn.com)

**Saint Elizabeth Home**  
 ■ Short Term Rehab  
 ■ Long Term Care  
 ■ Alzheimer's Disease Special Care  
 One Saint Elizabeth Way, East Greenwich, RI 02818  
**401.471.6060**  
[www.stelizabetchcommunity.com](http://www.stelizabetchcommunity.com)

**READY.GOV**  
 Don't be afraid...Be Ready

**Janis Cappello**  
 #1 RI Coldwell Banker Agent  
 #1 RI Sales Agent in East Greenwich  
**401.578.6656**  
[www.janiscappello.com](http://www.janiscappello.com)

West Warwick, Main Office: 821-9100  
 since 1828  
**Centreville Bank**  
 depend on us.  
[www.centrevillebank.com](http://www.centrevillebank.com)

**Russell J. Boyle & Son**  
**Funeral Home**  
 Thomas C. Boyle, Director  
 142 Centerville Rd., Warwick, R.I. **732-8800**

**ROOFING CONCEPTS, INC.**  
 LEONARD M. REYNOLDS, President  
 T 401-885-5800 • 800-675-1614 • F 401-885-3999  
[www.roofingconcepts.com](http://www.roofingconcepts.com)  
 1500 S. COUNTY TRAIL • E. GREENWICH, RI 02818

West Warwick, Main Office: 821-9100  
 since 1828  
**Centreville Bank**  
 depend on us.  
[www.centrevillebank.com](http://www.centrevillebank.com)

**Russell J. Boyle & Son**  
**Funeral Home**  
 Thomas C. Boyle, Director  
 142 Centerville Rd., Warwick, R.I. **732-8800**

**ROOFING CONCEPTS, INC.**  
 LEONARD M. REYNOLDS, President  
 T 401-885-5800 • 800-675-1614 • F 401-885-3999  
[www.roofingconcepts.com](http://www.roofingconcepts.com)  
 1500 S. COUNTY TRAIL • E. GREENWICH, RI 02818