



THE CHURCH OF

# Our Lady of Mercy

65 THIRD STREET ✕ EAST GREENWICH, RI 02818



Phone..... 401-884-4968 Fax ..... 401-884-1415

Parish Email.....parish@olmparish.org

Parish Website.....www.olmparish.org

## First Sunday of Advent ✕ November 30, 2014

### † MASS SCHEDULE †

#### Weekend

Saturday Vigil Mass..... 4:00 PM

Sunday Masses..... 7:30, 9:00 & 10:30 AM

September—May..... 5:00 PM

#### Daily

Monday - Friday..... 7:30 AM

Saturdays & Legal Holidays..... 8:30 AM

#### Holy Day

Vigil Mass..... 5:00 PM

Holiday Masses..... 7:30 AM & 7:00 PM

### Our Lady of Mercy School

**Mr. Scott W. Fuller**

*School Principal*

55 Fourth Avenue  
East Greenwich, RI 02818

School Phone ..... 884-1618

Email ..... secretary@olmschool.org

Web ..... www.olmschool.org

#### SACRAMENT OF CONFESSION

Mondays at 6:00 PM or by appointment.

Saturdays at 3:00 PM or by appointment.

#### SACRAMENT OF BAPTISM

Second Sunday of the month. Preparation Class is required. Please contact one of the parish priests prior to birth of your child.

#### SACRAMENT OF MARRIAGE

Please contact one of the parish priests one year prior to the proposed date of your wedding.

#### SACRAMENT OF THE SICK

Please contact one of the parish priests if you are shut-in, sick, homebound or hospitalized.

#### SACRAMENT OF HOLY ORDERS

Please contact one of the parish priests or the Office of the Director of Vocations at 331-1316 or www.catholicpriest.com.

#### PARISH OFFICE HOURS

Monday - Friday..... 8:00 am - 4:00 pm

**The Very Reverend Bernard A. Healey, S.T.L., J.C.L., *Pastor***

**The Reverend Ryan W. Connors, S.T.L., *Associate Pastor***

**Joseph V. Cavanagh, Jr.**

**William K. Wray**

*Parish Trustees*





## **PARISH DIRECTORY**

### **PARISH OFFICE**

Father Bernard A. Healey, *Pastor* ..... 884-4968  
 pastor@olmparish.org

Father Ryan W. Connors, *Associate Pastor* ..... 884-4968  
 associatepastor@olmparish.org

Deacon John W. Dowd, *Deacon Assistant* ..... 884-4968  
 deacon@olmparish.org

Mr. David E. Cote, *Business Manager* ..... 884-4968  
 parish@olmparish.org

Mrs. Sandra A. Demers, *Admin. Assistant* ..... 884-4968  
 parish@olmparish.org

Mrs. Carolyn C. MacCrae, *Bookkeeper* ..... 884-4968  
 bookkeeper@olmparish.org

Mr. Paul E. Anderson, *Facilities Director* ..... 884-4968  
 parish@olmparish.org

St. Patrick's Cemetery Office ..... 886-5296  
 parish@olmparish.org

### **OFFICE OF RELIGIOUS EDUCATION**

Mrs. Michele St. Jean (*Grades 1-5*) ..... 884-1061  
 reled@olmparish.org

Mr. Douglas E. Green (*Grades 6-8*) ..... 884-4410  
 confirmation@olmparish.org

### **OFFICE OF OUTREACH**

Mr. Douglas E. Green, *Director* ..... 884-4410  
 outreach@olmparish.org

### **MUSIC MINISTRY & CHOIRS**

Mr. Henri M. St. Louis, *Music Director* ..... 884-4968  
 musicministry@olmparish.org

Mrs. Deirdre A. Donovan, *Soloist* ..... 884-4968  
 musicministry@olmparish.org

### **OLM SCHOOL**

Main Office ..... 884-1618  
 secretary@olmschool.org

Extended Day Program ..... 886-0742

New Discoveries Pre-School ..... 885-0776

*Mass Intentions*  
 for the *Week*

**First Sunday of Advent**  
 November 30, 2014

### **SATURDAY, NOVEMBER 29**

*The Mass of Anticipation for 1st Sunday of Advent*  
 4:00PM Arthur Bert—Memorial

### **SUNDAY, NOVEMBER 30**

*First Sunday of Advent*  
 7:30 AM The Parishioners of Our Lady of Mercy Church  
 9:00 AM Jennie Longo—9th Anniversary  
 10:30AM Mary Healey—35th Anniversary  
 5:00PM James Sheridan—2nd Anniversary

### **MONDAY, DECEMBER 1**

*Advent Weekday*  
 7:30 AM Deborah O'Connell—Memorial

### **TUESDAY, DECEMBER 2**

*Advent Weekday*  
 7:30 AM Mary Catherine Leddy —15th Anniversary  
 & Thomas Clifford Leddy—59th Anniversary

### **WEDNESDAY, DECEMBER 3**

*St. Francis Xavier, Priest*  
 7:30AM Fr. Stanley T. Nakowicz—2nd Anniversary

### **THURSDAY, DECEMBER 4**

*Advent Weekday/St. John Damascene, Priest & Doctor of the Church*  
 7:30AM Mary Gianardi—Birthday Remembrance

### **FRIDAY, DECEMBER 5**

*Advent Weekday*  
 7:30AM Salvatore Di Stefano—24th Anniversary

### **SATURDAY, DECEMBER 6**

*Advent Weekday/St. Nicholas, Bishop*  
 8:30AM Margaret "Peggy" Miller—Memorial  
*The Mass of Anticipation for 2nd Sunday in Advent*  
 4:00PM Anthony Reale—2nd Anniversary

### **SUNDAY, DECEMBER 7**

*The Second Sunday of Advent*  
 7:30 AM The Parishioners of Our Lady of Mercy  
 9:00 AM Dr. James Hagerty—8th Anniversary  
 10:30AM Katherine & Armando DeAngelis  
 & Concetta & Antonio Tribelli—Memorial  
 5:00PM Paul Mahoney—6 Month Anniversary





Dear Parishioners:

Happy Thanksgiving! I hope your holiday was truly enjoyable and you were able to spend some relaxing and celebrating with family. I was at my sister's home in Saratoga, New York for Thanksgiving Dinner. This has been our family tradition for many years. After Thanksgiving Day Mass I drive up to New York with my two sisters to spend the holiday with my third sister, her husband, and family. The ride isn't too long and the meal is always superb! Afterwards my brother-in-law and I get to watch a whole lot of football. He's a NY Giant fan but he's still a good guy!

Now that the Church Year has ended and the Thanksgiving Day Holiday has come and gone, we move into the Holy Season of Advent. While much of the world around us is telling us to hurry up, to shop, to buy, and to party, the Church tells us to pause, to prepare and to pray! So the season of joyful and prayerful anticipation of the coming of Christ begins again for us.

Christmas is less than a month away, but before we panic and join the secular rush to celebrate anything but Jesus Christ, we need to stop and to reflect on the real meaning of Christmas. It is our time to prayerfully and patiently say: "*Come, Lord Jesus!*"

No doubt our schedules are about to become busier and more hectic as we try to check off our lists of things to do, people to visit, parties to attend, cards to

send and gifts to buy. However, we need to ensure that our lists include time for prayer with the Lord. Have you ever considered coming to Daily Mass at 7:30AM during the Advent Season? It is truly a great way to begin and prayerfully prepare for your day.

You might also consider going to Confession before Christmas to receive God's mercy and forgiveness. Here at OLM Confessions are heard on Saturdays at 3:00PM and Mondays at 6:00PM.

In addition, right here at OLM we have scheduled ALL DAY CONFESSIONS on Saturday, December 13th from 9:00AM until 3:00PM. There are four priests hearing Confessions at all times so there are no lines. Also, on the Monday of Christmas Week, December 22nd, we are adding an extra hour of Confessions from 6:00PM until 8:00PM with some guest priests helping us.

We welcome and celebrate Advent as we sing: "*O Come, O Come Emmanuel!*", we pray: "*Come, Lord Jesus!*", we prepare the way with our commitment to Christ and with our many good works. Advent is here, the Lord is near! Let's get ready!

The arrival of the new Church Year on the First Sunday of Advent also means that we begin a new cycle of readings at Mass. The Lectionary, the book containing the readings for Mass, is arranged in two cycles, one for Sundays and one for weekdays. The Sunday cycle is divided into

three years, labeled A, B, and C.

In Year A, which just ended, we read mostly from the Gospel of Matthew. In Year B, which begins this weekend, we read the Gospel of Mark and chapter 6 of the Gospel of John. In Year C, we read the Gospel of Luke. The Gospel of John is read during the Easter season in all three years.

We give thanks to the many people who so generously provided food for Thanksgiving Food Baskets. We delivered quite a few baskets in time for Thanksgiving, and included gifts cards, thanks to your generous support of the Outreach Collection.

I thank those parishioners who have generously supported the Increased Giving Campaign. Many indicated they were increasing their level of support to OLM and I am grateful. I urge you complete the return envelope. Also, please consider giving online through the Electronic Fund Transfer service located on the parish webpage.

Advent begins today! Let us recall the Opening Prayer of Mass and truly "*resolve to run forth to meet Christ with righteous deeds at his coming!*" May this Holy Season of Advent truly be one of prayer, patience and preparation for the coming of Christ into our hearts, our lives, our families, our parish and our world! *O Come, O Come Emmanuel!* God Bless. Go Pats!

Father Healey

Fr. Connors

Q & A



**Dear Fr. Connors:** What does the Church teach about physician-assisted suicide?

Fundamental to Catholic teaching is the dignity of every human life. Everybody, everywhere, has dignity—and, in Christ, a destiny—beyond imagining. Every human life is sacred and everybody is a somebody.

The dignity of every life means killing the innocent is always wrong. This applies to everybody without exception especially the weak and marginalized, the unborn, the chronically and terminally ill, and the physically and mentally handicapped. Christians say that all of these are beautiful, precious and worthy of our love.

Euthanasia or physician-assisted suicide is an offense against human dignity. God is especially close to the aged and infirm who deserve our love and affection and should not be denied basic care. Ordinary care—including in principle food and water even administered by artificial means—should be given. One should die of a sickness or disease not be starved or dehydrated to death.

Extraordinary measures are, on the other hand, not required to be administered. Prudent judgments keeping in mind the inherent dignity of every life and the redemptive value of human suffering have to be made.

The *Catechism of the Catholic Church* explains: “Discontinuing medical procedures that are burdensome, dangerous, extraordinary, or disproportionate to the expected outcome can be legitimate....Here one does not will to cause death; one’s inability to impede it is merely accepted.” This is quite different than the intentional killing of euthanasia or physician-assisted suicide. They are always a grave offense against the dignity of the human person.

As Pope Francis recently explained, it is a false compassion to take the lives of the sick and suffering. The value of human suffering—and the part it plays in the redemption of the world—is often not well-understood. A sick or suffering person deserves to be cared for not intentionally killed.

*If you have a question for Fr. Connors about the Catholic Faith or a matter of Church Teaching, please email him at [associatepastor@olmparish.org](mailto:associatepastor@olmparish.org)*

Weekly Collection 

**November 23, 2014**

Weekly Collection results are unavailable due to the Thanksgiving Day Holiday print deadline.

*If you have been away on vacation or visiting another parish, we kindly ask you to please make up your missed budget envelopes. We depend solely upon your weekly support to meet our weekly parish expenses.*

***Thank you for your generosity!***

**SECOND COLLECTION**

Next Weekend: Building & Grounds Collection

***Please remember Our Lady of Mercy Church in your will or estate.***



**The Sacrament of Confession**  
**at Our Lady of Mercy**

Mondays at 6:00PM  
Saturdays at 3:00PM

**The Immaculate Conception of the BVM**

**Patronal Feast of the United States of America**  
***A Holy Day of Obligation***



**Monday, December 8, 2014**

**Holyday Masses**

**7:30AM, 9:00AM & 7:00PM**

**First Friday Adoration**

**Friday, December 5, 2014**

**8:00AM — 6:00PM**

Join us for Eucharistic Adoration  
beginning at 8:00AM.

Benediction of  
the Blessed Sacrament at 6:00PM



*"In a world where there is so much noise, so much bewilderment, there is a need for silent adoration of Jesus concealed in the Host."—Benedict XVI, Pope Emeritus*



# Religious Education NEWS

## RE Class Schedule

RE Grades 1-5: Sunday, 10:00AM—11:00AM

RE Grades 6-8: Sunday, 6:00PM—7:00PM

If you are not receiving emails from the RE Office please send an email request to [reled@olmparish.org](mailto:reled@olmparish.org) and/or [confirmation@olmparish.org](mailto:confirmation@olmparish.org)

**No** RE Classes this weekend due to the Thanksgiving Day Holiday. **Happy Thanksgiving to all our RE teachers, students and families.**



# Outreach Update

The **OLM Food Pantry** is always in need of food please leave all donated food items in the Food Bin in the Vestibule of Church.

•**OLM Food Co-op** delivers “day old” breads and pastries to the Assumption Parish and St. Charles Parish in Providence. Volunteers are needed for deliveries. Please contact Doug Green at the Outreach Office.

•**Holiday Dinner items needed:** Traditional items of cranberry sauce, gravy, stuffing, potatoes, yams, soups, vegetables, puddings, Jell-O, pie filling, pie crust, etc. are needed as we prepare for Thanksgiving and Christmas baskets for the needy. For more information, contact Doug Green at the Outreach Office.

**Thank you for your generous support.**

Doug Green, OLM Outreach Director

Phone: 884-4410 or via email: [outreach@olmparish.org](mailto:outreach@olmparish.org)



*The OLM School PTG Invite All Parishioners to*  
**Our Lady of Mercy's Annual  
 St. Nick's Village**  
**Saturday, December 6, 2014**  
**11am-1pm**  
**Admission \$8.00 per family**



Join us for a fun morning celebrating the Feast of St. Nicholas! Browse our visiting travelling exhibit to learn more about the Traditions of St. Nicholas around the world. Create a handmade traditional Advent wreath, take a family photo with St. Nicholas, listen to tales of the true meaning of Christmas and make a personalized ornament to hang on your Christmas tree.

Light refreshments served.

# ALL DAY CONFESSIONS

**OUR LADY OF MERCY CHURCH**  
 65 Third Street, East Greenwich, RI

**Saturday, December 13, 2014**  
**from 9:00am – 3:00pm**



Eucharistic Adoration during the hours of Confession.  
 Four priests available at all times, no lines and no waiting.  
 For more information, call 884-4968  
[www.olmparish.org](http://www.olmparish.org)

**“Be courageous! Go to Confession!”**  
 -POPE FRANCIS-

## Tax Savings & Gift Giving



Now is the season we give thanks to God for all He has done for us this past year and throughout our lives. It is also a good time to reflect on how we might return a portion of our blessings to Him through a special year-end gift of cash or other assets such as stock. You can designate your gift to Our Lady of Mercy School Scholarship Fund or Our Lady of Mercy Church unrestricted general fund. Remember, non-cash gifts like stocks should be donated in plenty of time to allow for the transfer of ownership before the end of December in order to qualify for any tax savings in the current calendar year. Speak with your financial advisor about the gift option that would work best for you. Or, contact OLM Business Manager Dave Cote at 401-884-4968.

## Keep Christ in Christmas



The Knights of Columbus are selling religious themed Christmas cards again this year after Sunday Masses. The card sale begins the first weekend of Advent (11/29-30) and ends the third weekend of Advent (12/13-14). All proceeds from the sales go to support OLM

Outreach.

*The Knights of Columbus, Council 58, is a fraternal order of men, who perform charitable work in support of Our Lady of Mercy church. If you are interested in the Knights of Columbus, please contact Tom Mahoney at [tom@tommymahoney.com](mailto:tom@tommymahoney.com).*

## **Pawtuxet Valley Community Chorus presents 'The Season of Joy'**



On Saturday, December 6 at 7 p.m. and Sunday December 7 at 2 p.m., Pawtuxet Valley Community Chorus will present "The Season of Joy" at West Warwick High School, 1 Webster Knight Drive. Featured guests include **Our Lady of Mercy Children's Choir**, as well as the Immaculate Conception Bell Choir. Tickets are \$12 in advance or \$15 at the door. For more information, call 862-3105, email

[PVChorus@gmail.com](mailto:PVChorus@gmail.com), or visit [ww.pvchorus.com](http://ww.pvchorus.com)



## **You're Invited!**

**OLM 2014  
Christmas Shopping Night  
Thursday, December 4<sup>th</sup>  
from 5:00pm – 9:00pm  
At  
Our Lady of Mercy School**

Please join us for a fun, festive evening filled with beautiful handmade items and artwork from local crafters and artisans!

Wine Tasting sponsored by  
Greenwich Liquors

Hor d'oeuvres served from local  
restaurants.

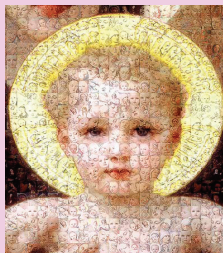
A Sampling of Favorites from local Farmers  
Markets

Fantastic Raffle Prizes

*Get your Christmas shopping done early  
and celebrate the season in style!  
We hope to see you there!*

For more information or to inquire about reserving a  
booth, please contact Kathy Royce at:  
[royceri@verizon.net](mailto:royceri@verizon.net) 401-465-4208

## Christmas Anticipation Prayer



*Beginning on St. Andrew the Apostle's feast day, November 30, the following beautiful prayer is traditionally recited fifteen times a day until Christmas. This is a very meditative prayer that helps us increase our awareness of the real focus of Christmas and helps us prepare ourselves spiritually for His coming.*

**Hail and blessed be the hour and moment In which the Son of God was born Of the most pure Virgin Mary, at midnight, in Bethlehem, in the piercing cold. In that hour vouchsafe, I beseech Thee, O my God, to hear my prayer and grant my desires, [here mention your request] through the merits of Our Savior Jesus Christ, and of His blessed Mother. Amen**

# HILL FUNERAL HOME

Michael E. Caparco, Director  
 Deborah A. Caparco Runshe • Betsy M. Caparco Harris  
 822 Main Street, East Greenwich **884-9222**



Buyers, Sellers and Appraisers of ESTATE JEWELRY  
 3228 Post Road  
 Apponaug Village  
 Warwick, RI 02886  
 www.placejewellers.com  
 401-738-0511

# FRANK'S TOWN LINE LIQUOR

**884-7517**  
 5782 Post Road • E. Greenwich

Since 1977  
**PrintShops Inc.**  
 Quality Printing and Graphic Services  
**Your Quality Starts Here!**  
**401-885-1226**  
 Ken and Bernice Mills ~ Owners  
 70 Cliff Street E. Greenwich

*Scalabrini Villa*  
 A Skilled Nursing & Short Term Rehab Facility  
 COME VISIT US: The best way to experience Scalabrini Villa is through a tour. We invite you to call to schedule a personal visit.  
 Our short term rehab unit is designed with beautiful private rooms overlooking Narragansett Bay.  
**TEL 401-884-1802 www.scalabrinivilla.com**  
**FAX 401-884-4727 • dianeg@scalabrinivilla.com**

# BRENTWOOD NURSING HOME

4000 Post Road • Warwick, RI  
**(401) 884-8020**



**Faith Based Counseling**  
 (401) 284-2933 • www.journeyllc.com

# CABARET MUSIC

John at the Piano  
**Michael - Vocals & Guitar**  
 Featuring music from the Great American Song Book PLUS Broadway, Folk and Neapolitan Songs in Italian  
**Call 401-829-1966**

# Chef-a-Roni

*Fancy Foods*  
 Since 1967 **884-8798**  
 Featuring regional specialties from Italy, Germany, Great Britain & Scandinavia, for over a quarter century.  
 2832 South County Trail • East Greenwich, RI

*KMercurio* LLC  
 Italian Leather Handbags  
*Made in Italy*  
 Visit Our Website at [kmercurio.com](http://kmercurio.com)

Richard Beaupre, LICSW, President  
[richard@journeyllc.com](mailto:richard@journeyllc.com)

THE VILLAGE AT SOUTH COUNTY COMMONS  
 35 SOUTH COUNTY COMMONS WAY, SUITE D8  
 SOUTH KINGSTOWN, RHODE ISLAND 02879

**COBBLESTONES**  
**\$6.95 WOOD-FIRED PIZZA Take Out**  
**Lunches 398-8880 Coupons**  
 cobblestonespizzari.com  
 5641 Post Rd., E.G. across from Benny's Plaza

# ED FIELD FOR TOWN COUNCIL

Thank You for Your Vote



# FINN'S HARBORSIDE

Soothing Charm On The Water With A Beautiful Full Water View

Specializing In: Lobster • Seafood • Steaks

38 Water Street / East Greenwich • [www.finnsharborside.com](http://www.finnsharborside.com) **884-6363**

# HOLLYWOOD LANDSCAPING, INC.

Complete Landscape Services  
**(401) 737-2042**  
 Jon Halliwell Commercially Insured

It's never too early for a conversation. Call us.  
 We can answer your questions. 401-415-4200

OUR ADVERTISING SPONSORS MAKE THIS BULLETIN POSSIBLE!



FOR MORE INFORMATION OR TO ADVERTISE  
 Call Ed at 401-286-5899

Health care is complex. Every situation is different and it's not always clear when it's time for hospice care. We can answer your questions and provide the information you need to make decisions for yourself or a loved one. Just call.

We provide expert, quality, compassionate health care to people facing serious illness.

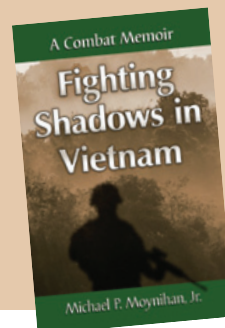


Home & Hospice Care  
 OF RHODE ISLAND

1085 North Main Street Providence, Rhode Island 02904 401-415-4200 [www.hhcri.org](http://www.hhcri.org)



*In this memoir, set as deeply in his mind as in the Southeast Asian jungle, a young American soldier embarks on a journey to a war that, for him, will never be over.*



The world was a playground for Mickey, a naive Irish American kid bored with his life. His father served in World War II, his brother was a Marine in Vietnam; now it was his turn. His 365 days in Vietnam builds in torment until an attack on a bunker complex in Cambodia. Wounded, his friend captured, he becomes a tormented survivor knowing he is always just a heartbeat from death.

**AVAILABLE NOW!**

Scan Here:



or visit: <http://goo.gl/ZGdeFF>

WHEN YOU HELP THE AMERICAN RED CROSS,  
 YOU HELP AMERICA.

CALL 1-800-HELP NOW OR VISIT US AT [REDCROSS.ORG](http://REDCROSS.ORG)



**DOORLEY AGENCY, INC.**  
**INSURANCE**  
 17 Sixth Ave. • East Greenwich, RI 02818  
 (401) 886-9600 • Fax (401) 886-9622  
[www.DoorleyAgency.com](http://www.DoorleyAgency.com)

**Wesson Construction, Inc.**  
 Rick Wesson, Lic.# 17503  
 ADDITIONS • CUSTOM CABINETS • REMODELING  
 66 RIDGEFIELD DRIVE • E. GREENWICH, RI  
 401.884.0970

**DR. ROBERT E. MILLER • DR. STEPHANIE SCHULTZ**  
 COMPLETE FAMILY EYE CARE  
 CONTACT LENSES QUALITY EYEWEAR  
 5393 Post Road East Greenwich, RI  
 884-6066  
 Fellow American Academy of Optometry

**Wild Harvest**  
 BAKERY • CAFÉ • CATERING  
 Callation Dinners & Catering/Private Events  
 Coll Chef Erica Maddalena at 336-3996  
 TWO LOCATIONS!!! Benny's Plaza &  
 1675 South County Trail (New Location!)

**Al Luciano**  
 SANDING BARK MULCH  
 21 Victory St., East Greenwich  
 884-2998

Welcome to Playground Prep  
 Preschool and Child Care Center  
 Where every child is made to feel  
 valued and successful  
 401-885-PLAY (7529)  
 Full Day & Half Day • Before & After School  
 Kindergarten • Summer Programs  
 An Early Education Adventure [www.playgroundprep.com](http://www.playgroundprep.com)

Rhode Island's  
 Foremost Banquet  
 Facility Overlooking  
 Narragansett Bay  
 LORRAINE KANE  
 884-1100

**THE ORIGINAL**  
**Watson Mulch**  
 Pavers • Natural Stone • Bark Mulch • Cobblestone • Decorative Stone  
 Retaining Walls • Screened Loam • Stone Veneer • Bluestone Flagging

1500 SOUTH COUNTY TRAIL, ROUTE 2  
 EAST GREENWICH, RI  
 401-885-0600  
[WWW.WATSONMULCH.COM](http://WWW.WATSONMULCH.COM)

**BASLER CHIROPRACTIC**  
 Dr. Steven M. Basler ~ Dr. Kathy L. Basler  
 885-0260

**Nationwide Insurance**  
 Nationwide Mutual Insurance Company and Affiliated Companies. Home office: Columbus, OH 43235-2225

**ALPHA APPRAISAL COMPANY**  
 Richard Bartlett  
 4635 Post Rd, Warwick  
 401-886-9300 [dick@alphaappraisal.net](mailto:dick@alphaappraisal.net)

**HOME LOAN INVESTMENT BANK**  
 Helping Rhode Islanders since 1959  
 > Residential Mortgages & Refinancing  
 > Auto Financing > Home Improvement Loans  
 > Small Business Loans > Personal/Business Checking  
 > Online Bill Payment & Surcharge-Free ATMs\*  
[www.homeloanbank.com](http://www.homeloanbank.com) • 800-223-1700  
 Member FDIC

**Zelano Insurance Agency**  
 949-1550


**THORPE'S WINES & SPIRITS**  
 Your Full Service Liquor Store  
 609 MAIN STREET • EAST GREENWICH

**COLDWELL BANKER**  
 527 Main St. East Greenwich, RI  
 Owned And Operated By NRI LLC  
 NewEnglandMoves.com  
**Ander Schaller, Sales Associate**  
 401-884-8050 x133 BUS.  
 401-248-4026 CELL  
[ander.schaller@NEMoves.com](mailto:ander.schaller@NEMoves.com)

Call me today for more information on how your business can benefit by joining the others who support this church bulletin program.

- Edward

401-286-5899



**Keys to Fun Music & Lesson Center**  
 PLAY ORGAN, PIANO OR KEYBOARD IN  
 10 WEEKS GUARANTEED - \$19.95 COMPLETE  
 \*\*Adult Hobbyists Only 50+\*\*  
 CALL TODAY ... SPACE IS LIMITED  
 401-277-9800  
[keystofunjohnstonri@yahoo.com](mailto:keystofunjohnstonri@yahoo.com)

**BART'S INC. CARPET SALES**  
 a complete flooring center  
 884-8300 • 295-0164  
[www.bartscarpet.com](http://www.bartscarpet.com)  
 491 DAVISVILLE ROAD • NORTH KINGSTOWN, RI  
 Call For Easy Directions  
 TRY BART'S X-TRA CLEAN CARPET

**John F. Morris CRPC, Financial Advisor**  
**WADDELL & REED**  
 Financial Advisors  
 Personal & Business Financial Planning • MUTUAL FUNDS  
 RETIREMENT PLANNING • EDUCATION FUNDING  
 INSURANCE PLANNING • ESTATE PLANNING  
 Office: 401-885-2942  
[jfmmorris@wradvisors.com](mailto:jfmmorris@wradvisors.com)  
 Investing. With a plan!  
 Waddell & Reed, Inc. Member SIPC 1300 DIVISION ROAD • SUITE 302 • WEST WARWICK, RI 02893  
 Insurance products are offered through insurance companies with which Waddell & Reed has sales arrangements. 9554 (09/09)

**Natural Essence Salon**  
 HAIR • NAILS • SKIN  
 "Free Consultations"  
 (401) 884-7000  
 GREENWICH VILLAGE • 1050 MAIN ST., EAST GREENWICH, RI

**Remington House Inn**  
 (401) 736-8388  
 Patrick & Michael Berek  
 Proprietors  
 Conroy Outar, General Mgr.  
[www.theremingtonhouseinn.com](http://www.theremingtonhouseinn.com)  
 Located in historic Apponaug Village  
 3376 Post Road  
 Warwick, RI 02886

**INJURED AT WORK?**  
 Call Attorney Stephen J. Dennis  
 Protect Yourself. Protect Your Family.  
 Call For A Free Consultation Today!  
 Office: 401-453-1355 • Cell: 401-595-4571  
 127 Dorrance Street • 3rd Floor • Providence, RI 02903  
 Auto Accidents • Injuries at Work • Slip and Fall

**Saint Elizabeth Home**  
 Short Term Rehab  
 Long Term Care  
 Alzheimer's Disease Special Care  
 One Saint Elizabeth Way, East Greenwich, RI 02818  
 401.471.6060  
[www.stelizabethcommunity.org](http://www.stelizabethcommunity.org)  
 A non-profit, nonsectarian 501(c)(3) charitable organization and CareLink Partner

**ELOQUENCE FINE JEWELRY & GIFTS**  
 5849 POST ROAD E. GREENWICH, RI 02818  
 401.885.9141  
 164 MAIN STREET E. GREENWICH, RI 02818  
 401.885.6100  
 36 S. COUNTY COMMONS S. KINGSTOWN, RI 02879  
 401.284.3333

find out how far your heart can reach  


**Love Your Job Again!**  
 Mary T. O'Sullivan, MSOL  
 Career Coach  
 401-742-1965  
 Member ICF, SHRM  
[www.facebook.com/Encoreexecutivecoaching](http://www.facebook.com/Encoreexecutivecoaching)  
[Encoreexecutivecoaching.com](http://Encoreexecutivecoaching.com)

Millions of people overseas depend on you. PLEASE HELP.  
 1-888-354-0060  
**OCRS** faith. action. results.  
 CRS.ORG/cb

**INTEGRATED MEDICAL WEIGHT LOSS**  
 886-9669  
 Your permanent weight loss is our passion  
 is our passion  
 Beth Rocchio, MD  
[www.IntegratedMedicalWeightLoss.com](http://www.IntegratedMedicalWeightLoss.com)

**Janis Cappello**  
 #1 RI Coldwell Banker Agent  
 #1 RI Sales Agent in East Greenwich  
 401.578.6656  
[www.janiscappello.com](http://www.janiscappello.com)

**Dial/Chariho Oil Service**  
 Discount Fuel Oil • Kerosene • Diesel Fuel  
 24 Hour Burner Service • Same Day Delivery  
 ~ Family Owned & Operated ~  
**\$5.00 OFF WITH THIS AD**  
 CALL FOR DELIVERY  
 Dial 401-821-4447 • Chariho 401-539-2900  
 1010 TIOGUE AVENUE • COVENTRY, RI 02816  
 West Warwick, Main Office: 821-9100  
 since 1828

**TO THE POINTE OF Performing Arts**  
 Artistic Director: Sheri Masiello  
 Quality Classes Offered to AGES 18mths-ADULT  
 Professional \* Fun \* Organized  
 \*Reasonable Rates\*  
 \*Easy Payment Plan\*  
 Non-Competitive \* Educational  
 Family-Friendly \* Experienced Staff

**Russell J. Boyle & Son Funeral Home**  
 Thomas C. Boyle, Director  
 142 Centerville Rd., Warwick, R.I. 732-8800

**Centreville Bank**  
 depend on us.  
[www.centrevillebank.com](http://www.centrevillebank.com)

**CRANSTON** No. Providence COVENTRY  
 999 Oaklawn Ave. 1525 Smith St. 2435 Nooseneck Hill  
 942-5554 354-0054 385-9500  
[www.tothepointeofperformingarts.com](http://www.tothepointeofperformingarts.com)

**ROOFING CONCEPTS, INC.**  
 LEONARD M. REYNOLDS, President  
 T 401-885-5800 • 800-675-1614 • F 401-885-3999  
[www.roofingconcepts.com](http://www.roofingconcepts.com)  
 1500 S. COUNTY TRAIL • E. GREENWICH, RI 02818